

THE KINGS HIGHWAY No. 417

PART 10 PLAN 5R-167 (MTO PLAN P-6092-1)
PART 9 PLAN 5R-167 (MTO PLAN P-6092-1)
PIN 04538 - 0161

LOT 9 CONCESSION 4

PART 3 PLAN 5R-13359
PART 4 PLAN 5R-13359
PART 5 PLAN 5R-13359
PIN 04538 - 0096

LOT 8

PART 1
PART 2
CONCESSION
PART 1
PLAN 5R-924
PIN 04538 - 0094

PART 3

Detail A

Municipally Known As DAVID MANCHESTER ROAD
(ROAD ALLOWANCE BETWEEN CONCESSIONS 4 & 5)
PIN 04538 - 0163

NORTHSHIRE DRIVE

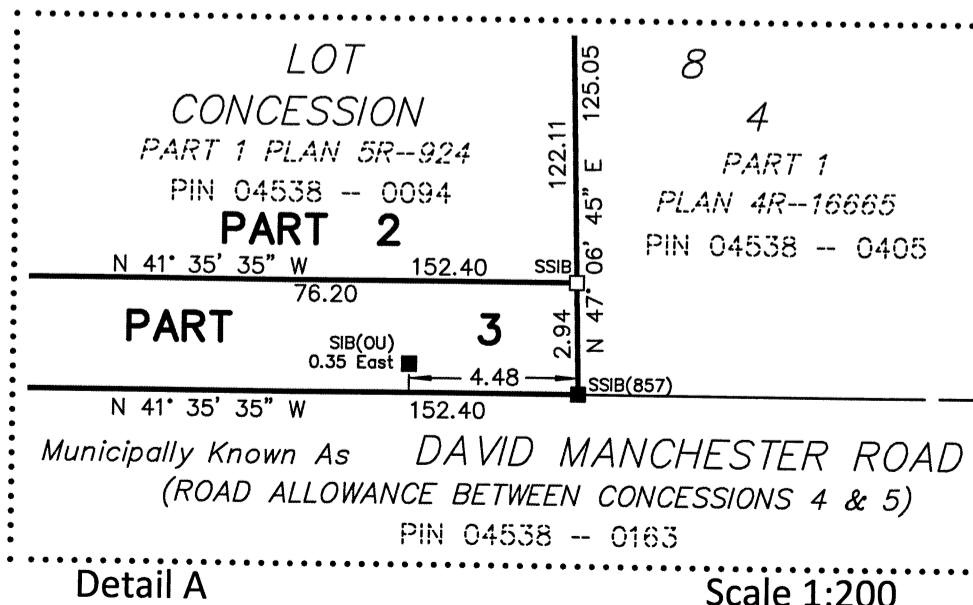
BLOCK 40 (0.5m RESERVE)

REGISTERED PLAN 4M-382

BLOCK 49 (0.5m RESERVE)

LOT 8 CONCESSION 5

LOT 1 REGISTERED PLAN 4M-382



Detail A

Scale 1:200

I REQUIRE THIS PLAN TO BE DEPOSITED UNDER THE LAND TITLES ACT.
DATE: Sept. 28/20

PLAN 4R-33133
RECEIVED AND DEPOSITED

DATE: September 29, 2020

DANIEL ROBINSON
ONTARIO LAND SURVEYOR

"J. Hansen"
REPRESENTATIVE FOR LAND REGISTRAR
FOR THE LAND TITLES DIVISION OF
OTTAWA-CARLETON NO. 4.

SCHEDULE

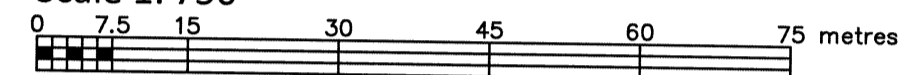
PART	LOT	CONCESSION	PIN	AREA (Sq.m.)
1	PART OF 8	4	ALL OF 04538 - 0094	9284.0
2				9284.0
3				447.9

PLAN OF SURVEY OF

PART OF LOT 8
CONCESSION 4
GEOGRAPHIC TOWNSHIP OF HUNTLEY
CITY OF OTTAWA

FARLEY, SMITH & DENIS SURVEYING LTD. 2020

Scale 1: 750



Metric Note

Distances and coordinates on this plan are in metres and can be converted to feet by dividing by 0.3048.

Distance Note

Distances shown on this plan are ground distances and can be converted to grid distances by multiplying by the combined scale factor of 0.99989.

Bearing Note

Bearings are MTM grid, derived from the Can-Net Real Time Network. GPS observations on reference points A and B, shown hereon, having a bearing of N 41°46' 15" W and are referred to the Central Meridian of MTM Zone 9 (76°30' West Longitude) Nad-83 (Original).

For bearing comparisons, a rotation of 0°21'05" counter-clockwise was applied to bearings on P1, P2 & P3

CO-ORDINATES WERE DERIVED FROM CAN-NET REAL TIME NETWORK OBSERVATIONS, MTM ZONE 9, N.A.D. 1983 (ORIGINAL).

POINT ID	NORTHING	EASTING
(A)	5016654.99	343181.20
(B)	5016484.52	343333.46
01919750705	5016816.93	360806.84
01919770923	5013536.21	346275.92

CO-ORDINATES ARE MTM ZONE 9, N.A.D. 1983 (ORIGINAL), TO URBAN ACCURACY PER SEC. 14 (2) OF O.REG. 216/10, AND CANNOT, IN THEMSELVES, BE USED TO RE-ESTABLISH CORNERS OR BOUNDARIES SHOWN ON THIS PLAN.

Surveyor's Certificate

I certify that:
1. This survey and plan are correct and in accordance with the Surveys Act, the Surveyors Act and the Land Titles Act and the Regulations made under them.
2. The survey was completed on the 4th day of September, 2020.

Sept. 28/20
Date

DANIEL ROBINSON
Ontario Land Surveyor

Notes & Legend

- Denotes
- Survey Monument Planted
- Survey Monument Found
- SIB Standard Iron Bar
- SSIB Short Standard Iron Bar
- IB Iron Bar
- (Wit) Witness
- Meas Measured
- (P1) Plan 5R-924
- (P2) Plan 4R-16665
- (P3) Plan 5R-167
- OW Overhead Wires
- OP Utility Pole
- AN Anchor
- PWF Post and Wire

FARLEY, SMITH & DENIS SURVEYING LTD.

ONTARIO LAND SURVEYORS
CANADA LAND SURVEYORS

190 COLONNADE ROAD, OTTAWA, ONTARIO K2E 7J5
TEL. (613) 727-8226 FAX. (613) 727-1826

FILE No.: 361-20 INDEX No.: 4022